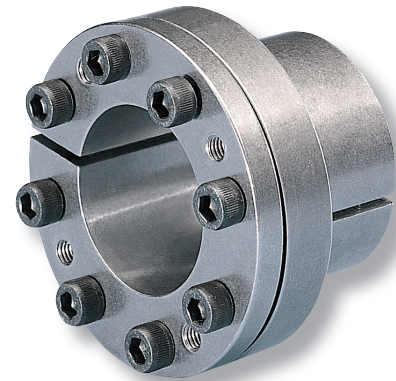


**Autocentrante  
Piccolo ingombro radiale**

*Self centering for  
Thin walled hubs*



**CONEX B**

d mm	D mm	D <sub>1</sub> mm	A mm	B mm	L mm	M mm	T <sub>s</sub> Nm	T Nm	F kN	P N/mm <sup>2</sup>
6	14	25	10	21,5	24,5	M 3	2,6	11	3,8	68
8	15	27	11,5	25	29	M 4	5,6	26	6,5	98
9	16	28	14	26	30	M 4	5,6	37	8	98
9,525	16	29	14	26	30	M 4	5,6	39	8	98
10	16	29	14	26	30	M 4	5,6	42	8	98
11	18	32	13,5	26	30	M 4	5,6	50	9	100
12	18	32	13,5	26	30	M 4	5,6	55	9	100
14	23	38	14	26	30	M 4	5,6	100	14	120
15	24	44	16	36	42	M 6	15	145	19	130
16	24	44	16	36	42	M 6	15	155	19	130
17	25	45	16	36	42	M 6	15	162	19	125
17	26	47	18	38	44	M 6	17	180	23	122
18	26	47	18	38	44	M 6	17	200	23	120
19	27	48	18	38	44	M 6	17	210	23	120
20	28	49	18	38	44	M 6	17	220	23	120
22	32	54	25	45	51	M 6	17	250	23	70
24	34	56	25	45	51	M 6	17	270	23	70
25	34	56	25	45	51	M 6	17	280	23	70
28	39	61	25	45	51	M 6	17	480	34	90
30	41	62	25	45	51	M 6	17	510	34	84
32	43	65	25	45	51	M 6	17	730	46	115
35	47	69	30	50	56	M 6	17	800	46	81
38	50	72	30	50	56	M 6	17	860	46	76
40	53	75	30	50	56	M 6	17	900	46	72
42	55	78	32	57	65	M 8	41	1800	84	125
45	59	85	40	65	73	M 8	41	1900	84	89
48	62	87	45	70	78	M 8	41	2000	84	75
50	65	92	45	70	78	M 8	41	2600	105	90
55	71	98	50	75	83	M 8	41	2900	105	70
60	77	104	50	75	83	M 8	41	3100	105	70

**CONEX B**

d mm	D mm	D <sub>1</sub> mm	A mm	B mm	L mm	M mm	T <sub>s</sub> Nm	T Nm	F kN	P N/mm <sup>2</sup>
65	84	111	50	75	83	M 8	41	3400	105	60
70	90	119	60	91	101	M 10	83	5800	170	80
75	95	126	60	91	101	M 10	83	6200	170	70
80	100	131	65	96	106	M 10	83	8000	200	80
85	106	137	65	96	106	M 10	83	8500	200	70
90	112	143	65	96	106	M 10	83	11200	250	90
95	120	153	65	96	106	M 10	83	11800	250	80
100	125	162	65	102	114	M 12	145	14600	300	95
110	140	180	90	128	140	M 12	145	16000	300	61
120	155	198	90	128	140	M 12	145	17400	300	55
130	165	203	90	127	140	M 12	145	25000	389	69

I Conex B da d = 6 fino a d = 14 raggiungono le piene coppie trasmissibili solo lubrificando le superfici coniche e le viti con olii contenenti additivi per alte pressioni (M<sub>0</sub>S<sub>2</sub>).

Conex B from d = 6 up to d = 14 can transmit the full transmissible torque only oiling the conical surfaces and the screws with oils with high pressure additives (M<sub>0</sub>S<sub>2</sub>).

